

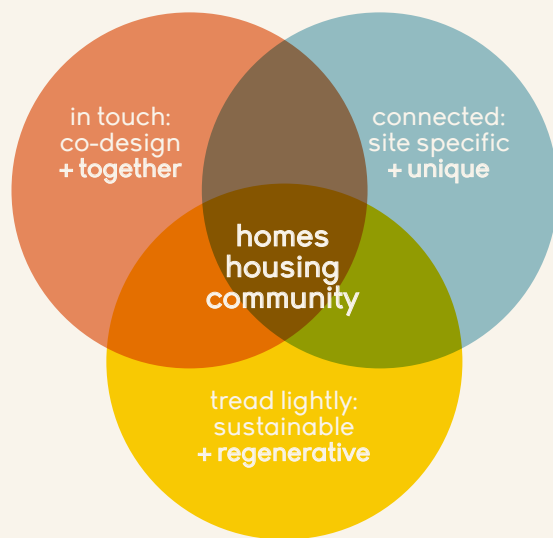
barefoot architects



set foot

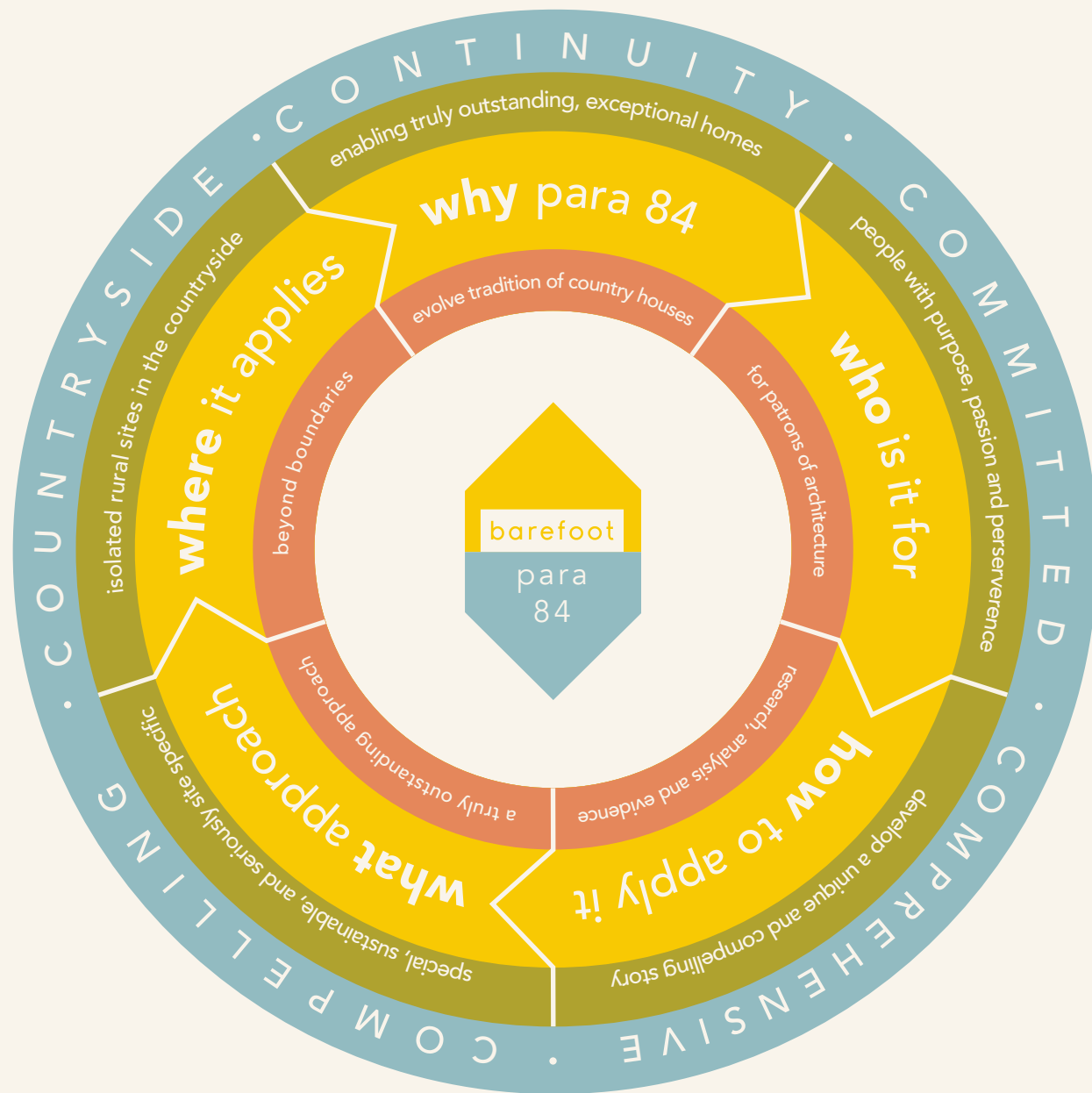
We co-design exciting ecological projects together with our clients.

Our buildings minimise their environmental footprint, are in touch with their community, and physically connected to their places. We are barefoot architects.



Our vision is to be the most ethical practice possible.

We work to do the right thing by people and communities we work with, by our planet, and by the places where we work. To date we have a 100% success rate for all Full Planning Applications determined.



Paragraph 84 states: e) the design is of exceptional quality, in that it:  
- is truly outstanding, reflecting the highest standards in architecture, and would help to raise standards of design more generally in rural areas; and  
- would significantly enhance its immediate setting, and be sensitive to the defining characteristics of the local area.

para-84



Paragraph 84 projects require us to push sustainable and regenerative design to its limits - to create something truly outstanding and totally of its place.

A great site in the countryside can have many defining characteristics, which in turn can lead to a great story. Consideration and research of the geology, archaeology, soil, local heritage, history, micro-climate, orientation, ecology, views are all opportunities to develop a unique, captivating story for a project.

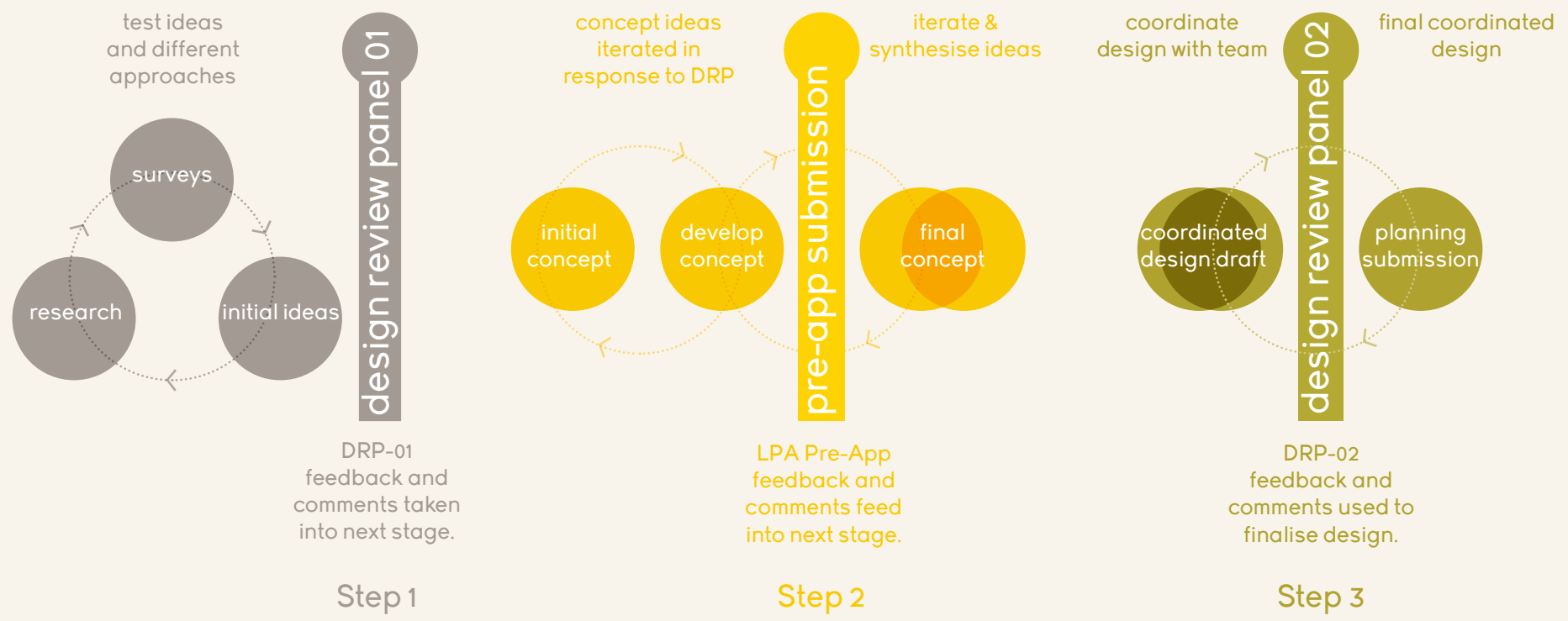
Our approach to these projects is to gather the right team, at the right time, and work with you and them to produce a considered and comprehensive design approach which we take to Design Review Panel, and the Local Planning Authority at appropriate stages to mitigate costs at risk to you and to give the project the best possible chances of success.

Each of our projects seeks to be 'regenerative'; and by that we mean that it should go beyond being 'sustainable', and to something which actively improves the site, environment, and ecology of a place to enable all of life to thrive and to significantly enhance the immediate landscape setting.

If you want to start a Paragraph 84 Project, then take the first step with Barefoot Architects. If you have the site, time and inclination to develop an exceptional project and want to work with our team, we would be excited to have a conversation with you and explore your site, ideas and project together.

The co-design process of a Paragraph 84 project is an 'iterative' one. It is necessarily convergent - moving from an initial design 'hypothesis', to a thoroughly coordinated, rigorously tested planning submission. As we work together through the different steps the design becomes increasingly more defined. At the beginning, our attention is on the 'story' and towards the end, we are focussed on the details. At each step we prepare work, and then share it with a Design Review Panel, and Local Planning Authority, so we can discuss, interrogate and refine it to the point of being 'truly outstanding'.

co-design



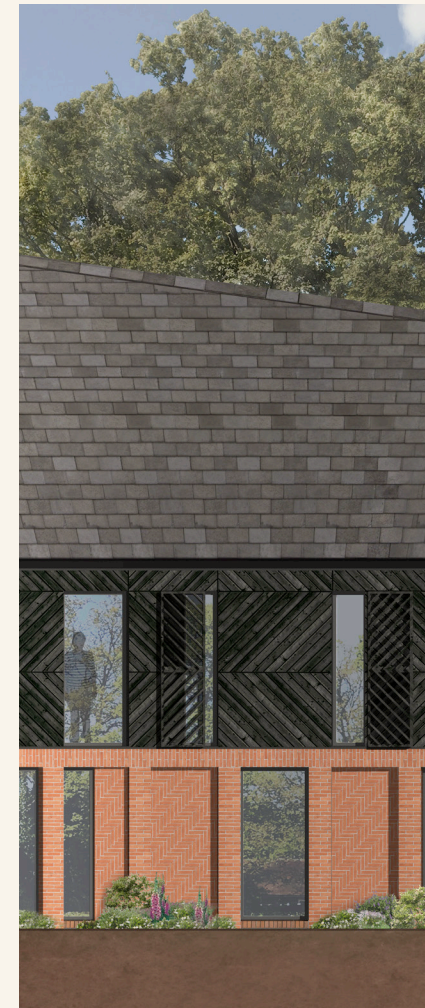
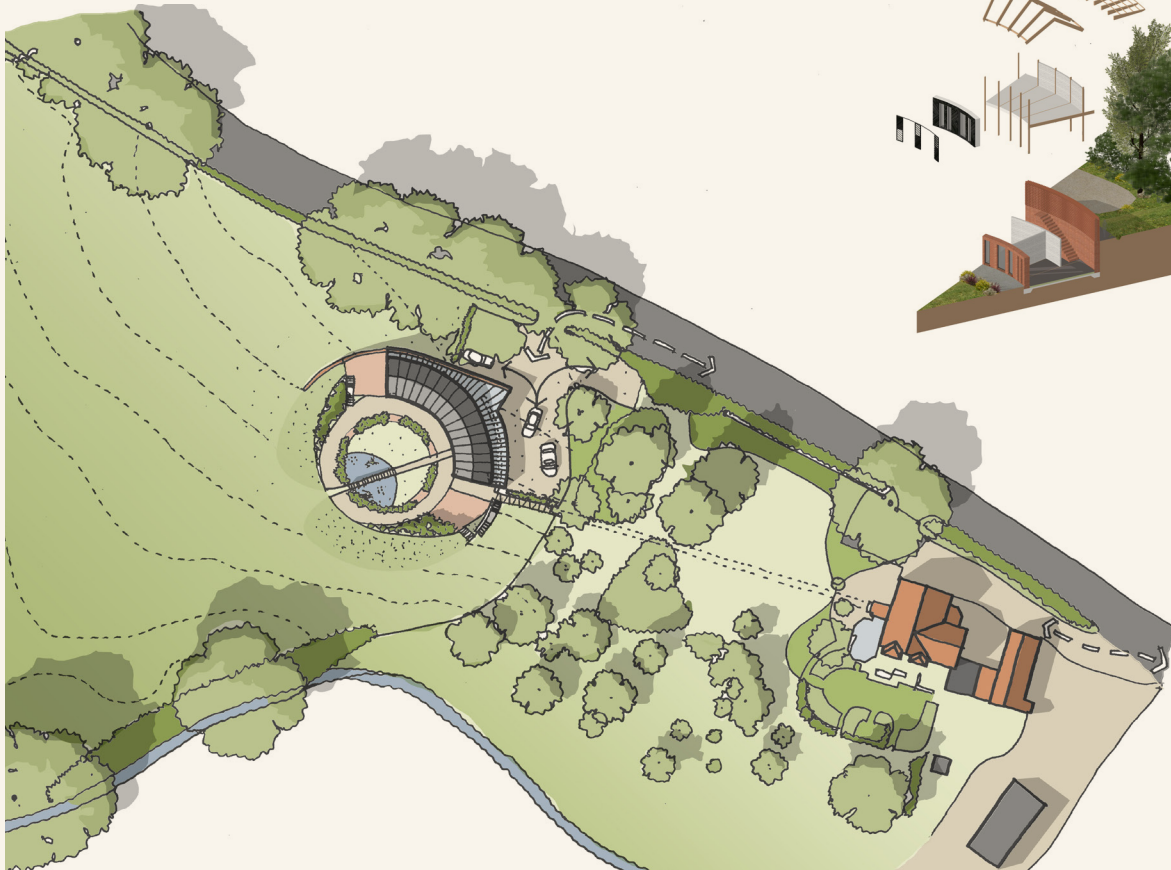
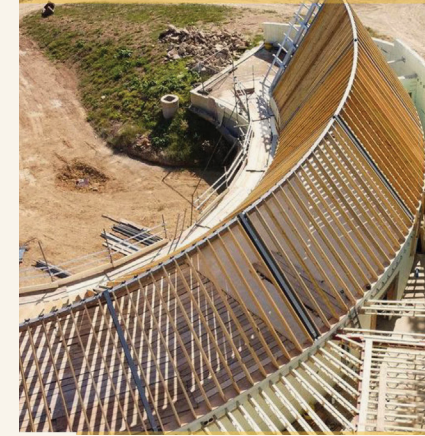
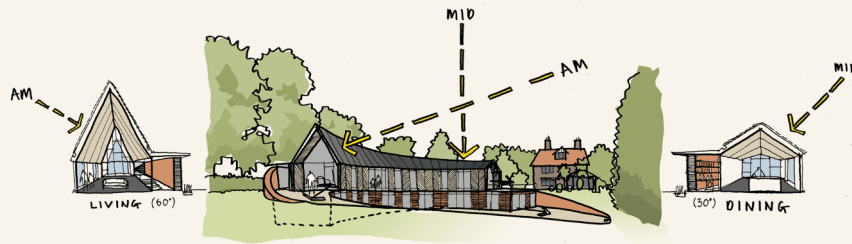
Terracette House:

A regenerative design proposal that will significantly enhance the immediate landscape setting. Land bridges connect the building to the woodland soil and surroundings. Walls built from site excavated chalk and timber frame clad with native timber. A truly outstanding, low impact design.



## Home Made House:

A truly self-build family house built adjacent to the clients parents home in rural Sussex. A stunning sculptural form which tracks the sun's path across the sky, optimising orientation and daylight. Built from unfired bricks formed from clay from the site.





# barefoot architects

## Fallen Tree Longhouse:

A spectacular longhouse that cuts through a clearing in a Sussex woodland site. Built entirely from timber, and creating a range of enhanced habitats for the local fauna, the design approach creates a flexible low impact family home that treads on the ground gently.



barefoot architects

info@barefootarchitects.co.uk  
www.barefootarchitects.co.uk

5.2, Paintworks, Bristol, BS4 3EH  
0117 9070 971

are you ready to  
**set foot?**

1 High Street, Totnes, TQ9 5NN.  
01803 446040